



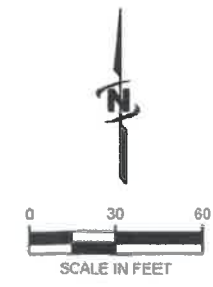
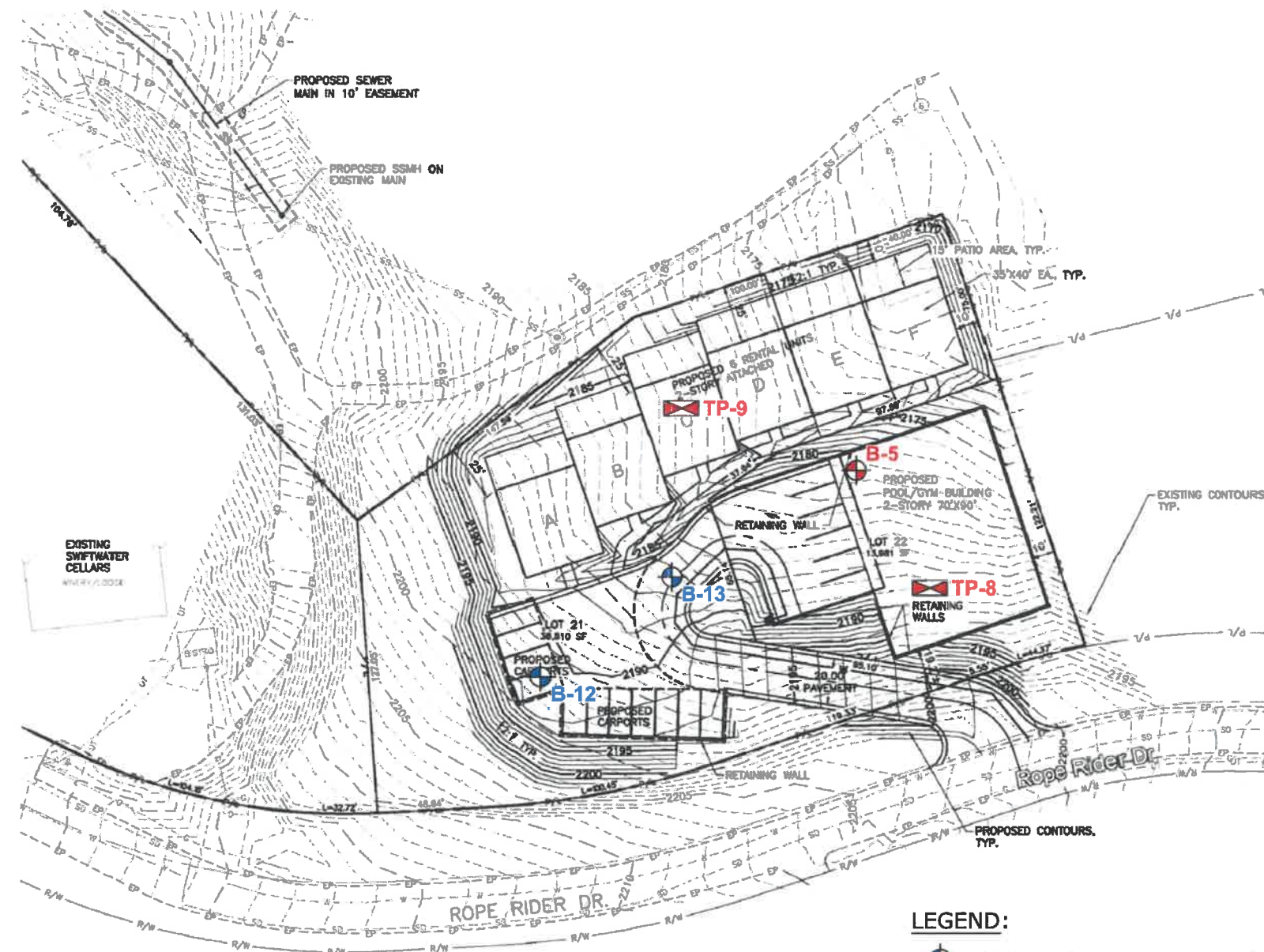





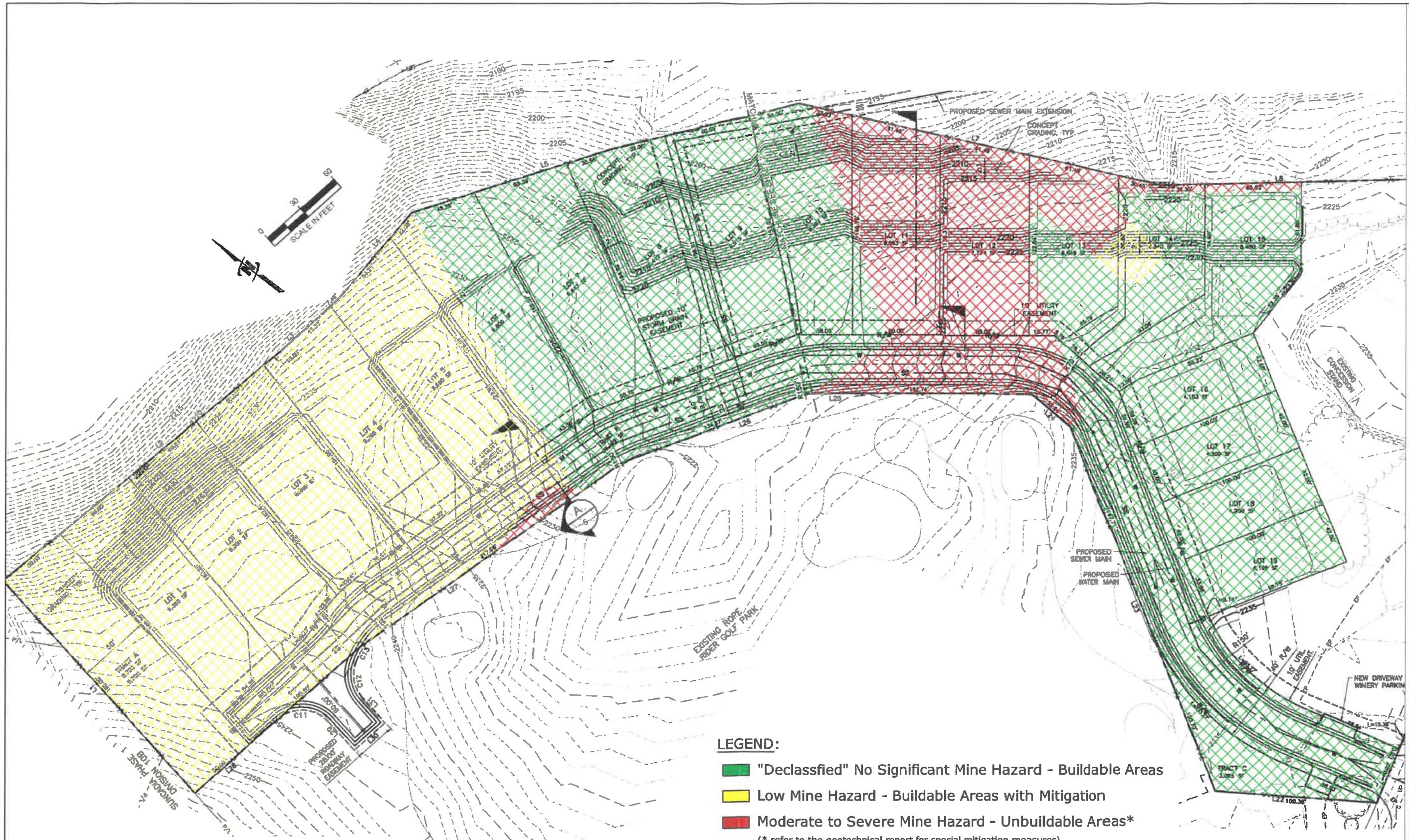
- LEGEND:**
-  GNN Borings (completed April 2018)
 -  GNN Borings (completed October 2017)
 -  GNN Test-Pits (completed October 2017)
 -  ICE Borings (completed 2004 to 2006)

NOTE:
 Combined base maps extracted from *Preliminary Utilities and Grading plans* (Sheets 2 & 3) prepared by JUB Engineers, Inc. dated 8/1/2017.



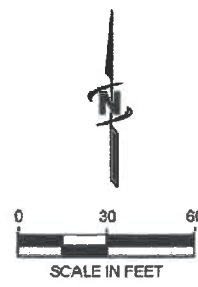
- LEGEND:**
-  GNN Borings (completed April 2018)
 -  GNN Borings (completed October 2017)
 -  GNN Test-Pits (completed October 2017)

NOTE:
 Base map extracted from *Preliminary Utilities and Grading plan* (Sheet 4) prepared by JUB Engineers, Inc. dated 7/27/2017.



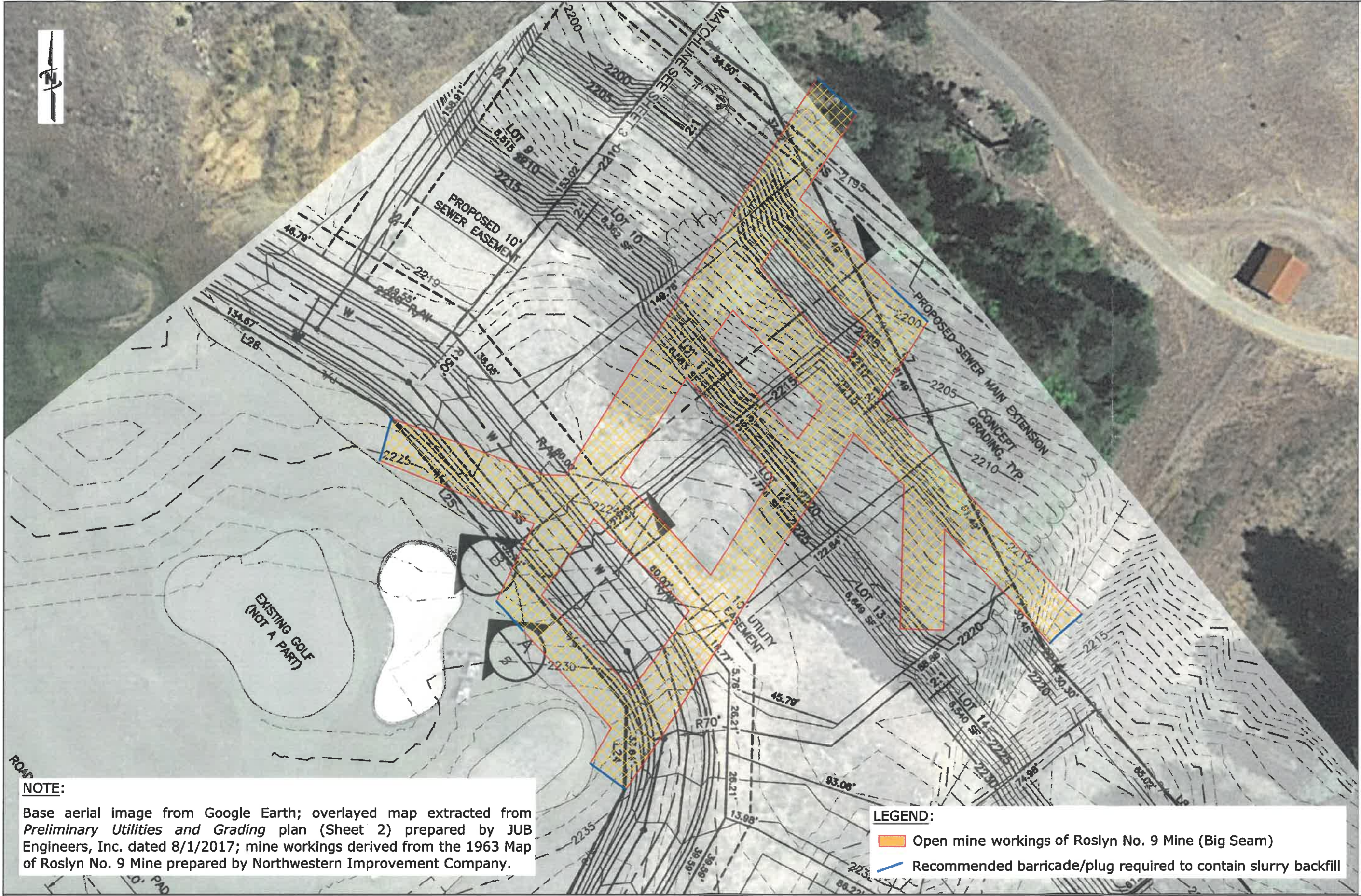
NOTE:
 Combined base maps extracted from *Preliminary Utilities and Grading* plans (Sheets 2 & 3) prepared by JUB Engineers, Inc. dated 8/1/2017.

- LEGEND:**
- "Declassified" No Significant Mine Hazard - Buildable Areas
 - Low Mine Hazard - Buildable Areas with Mitigation
 - Moderate to Severe Mine Hazard - Unbuildable Areas*
 (* refer to the geotechnical report for special mitigation measures)



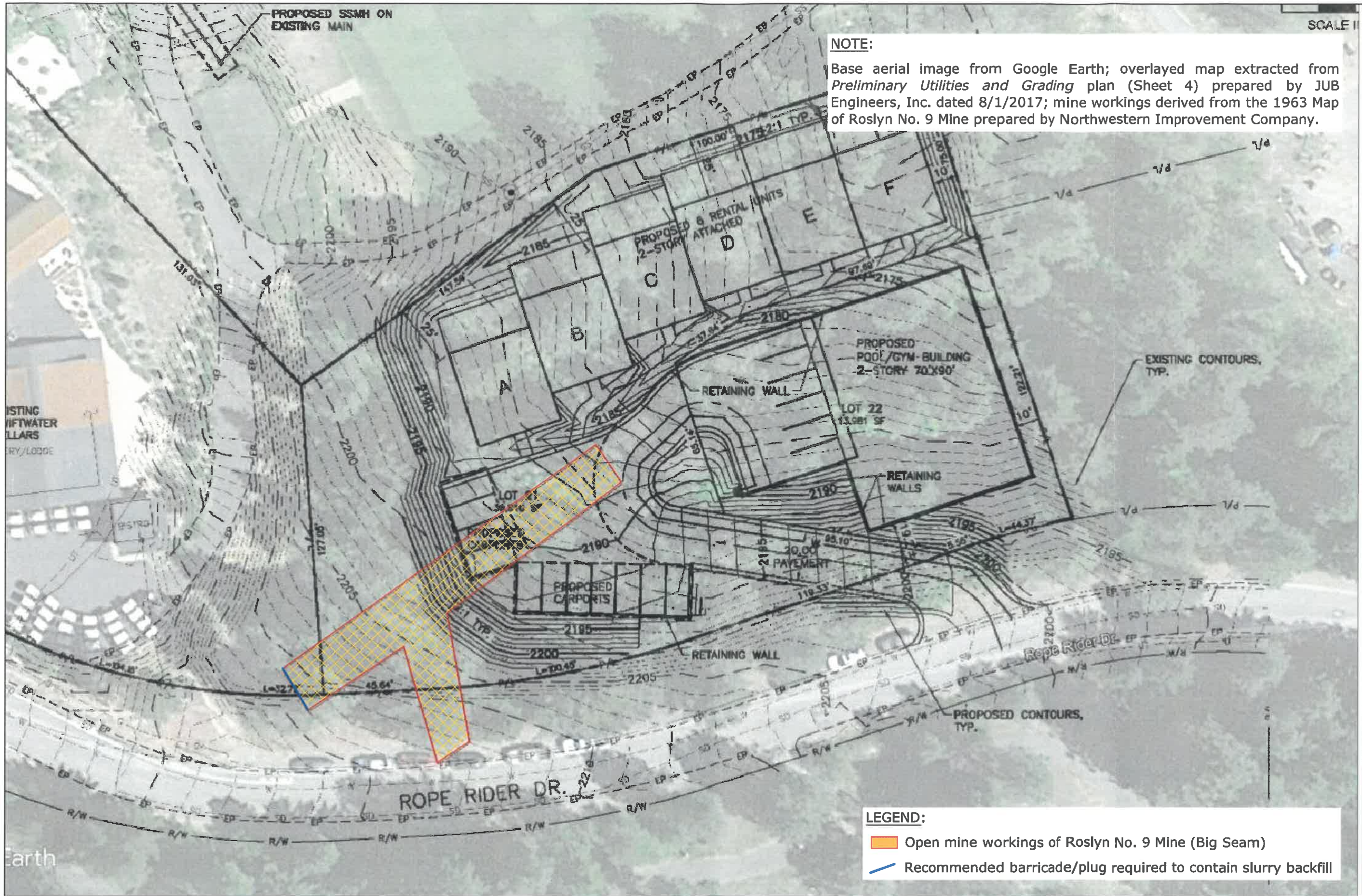
- LEGEND:**
- "Declassified" No Significant Mine Hazard - Buildable Areas
 - Low Mine Hazard - Buildable Areas with Mitigation
 - Moderate to Severe Mine Hazard - Unbuildable Areas*
- (* refer to the geotechnical report for special mitigation measures)

NOTE:
 Base map extracted from *Preliminary Utilities and Grading plan* (Sheet 4) prepared by JUB Engineers, Inc. dated 7/27/2017.



NOTE:
 Base aerial image from Google Earth; overlaid map extracted from Preliminary Utilities and Grading plan (Sheet 2) prepared by JUB Engineers, Inc. dated 8/1/2017; mine workings derived from the 1963 Map of Roslyn No. 9 Mine prepared by Northwestern Improvement Company.

LEGEND:
 [Yellow hatched box] Open mine workings of Roslyn No. 9 Mine (Big Seam)
 [Blue line] Recommended barricade/plug required to contain slurry backfill



NOTE:
 Base aerial image from Google Earth; overlaid map extracted from Preliminary Utilities and Grading plan (Sheet 4) prepared by JUB Engineers, Inc. dated 8/1/2017; mine workings derived from the 1963 Map of Roslyn No. 9 Mine prepared by Northwestern Improvement Company.

LEGEND:
 Open mine workings of Roslyn No. 9 Mine (Big Seam)
 Recommended barricade/plug required to contain slurry backfill

SCALE 1"



Northern, Inc.
 Consulting Engineers Environmental Scientists Geologists
 Construction Materials Testing Geophysical Services

OPEN MINE WORKINGS WITHIN AREA 2
 Winemaker's Cabins at Swiftwater Cellars
 301 Rope Rider Drive, Cle Elum, Washington

PROJECT NO. 217-871
 DATE: 6/4/2018
 FIGURE NO. 6